

# GGB-SHB®

**CASE HARDENED  
STEEL BEARINGS**



## APPLICATIONS

**Industrial** – Earth moving machinery, excavators, drilling machinery, farming machinery, various equipment grabs, buckets, grippers, hydraulic cylinder

## CHARACTERISTICS

- Steel bushings ideally suited for lubricated applications
- With plain or grooved sliding layer
- Suitable for grease lubrication
- Low rotation speed with high specific pressure

## AVAILABILITY

**Bearing forms available in standard dimensions:** Plain cylindrical bushes

**Bearing forms made to order:** Bearings with various lubrication grooves, non-standard parts

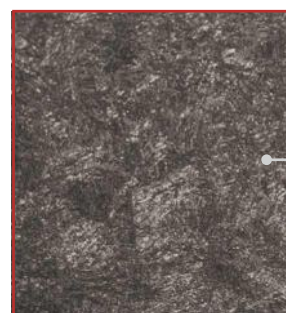


BEARING PROPERTIES		UNITS	VALUE
<b>GENERAL</b>			
Maximum load, p	Static	N/mm <sup>2</sup>	300
	Dynamic	N/mm <sup>2</sup>	150
Tensile strength		N/mm <sup>2</sup>	550
Operating temperature	Min.	°C	-20
	Max.	°C	150
Density			7.8
Coefficient of linear thermal expansion		10 <sup>-6</sup> /K	12
<b>GREASE LUBRICATED</b>			
Maximum sliding speed, U		m/s	0.1
Maximum pU factor		N/mm <sup>2</sup> x m/s	1.5
Coefficient of friction, f			0.2
<b>MATING MATERIAL</b>			
Bearing surface roughness, Ra		µm	≤ 0.8
Bearing surface hardness		HRC	58 - 62

**OPERATING PERFORMANCE**

Dry	Poor
Oil lubricated	Good
Grease lubricated	Very Good
Water lubricated	Not recommended
Process fluid lubricated	Depending on fluid

**MICROSECTION**



Steel E410, E470  
(20MnV6, AISI A381)  
acc. to EN 10305